



MONTHLY MEMBERSHIP PROGRESS REPORT

District 324A4

Results as of: 05/31/2018

GMT: N S SANKAR

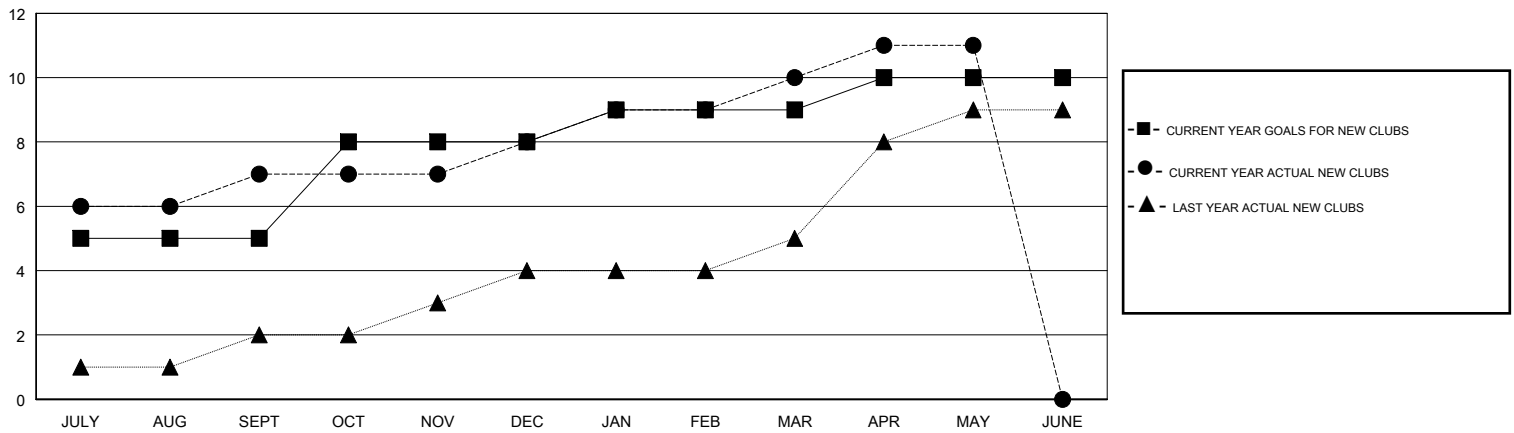
LOCATION INDIA

GMT CA

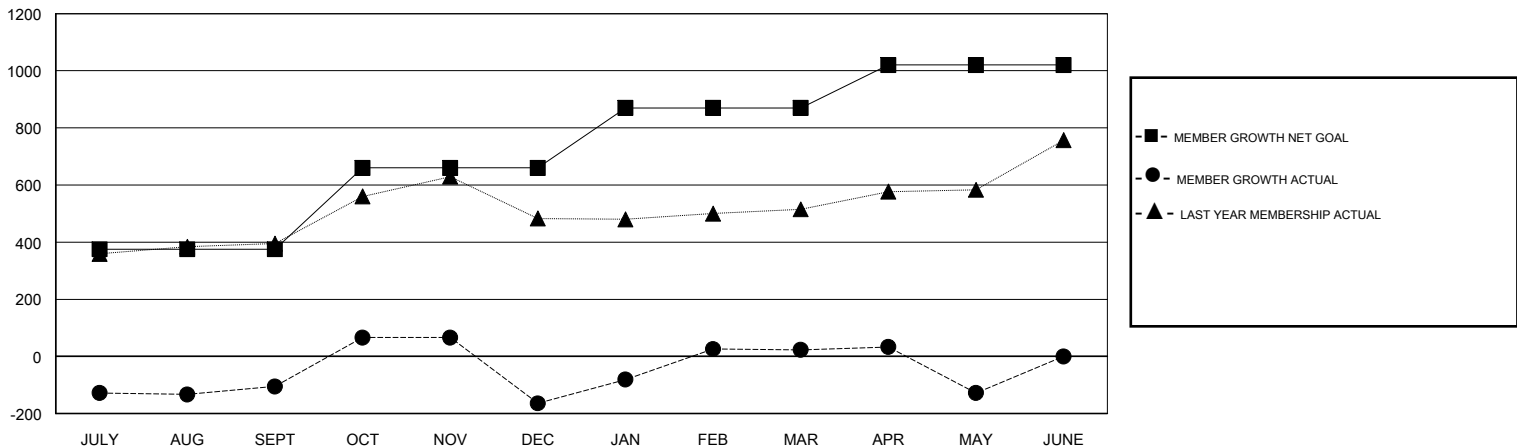
Clubs			
RESULTS FOR 2017-2018			
QUARTER	NEW CLUB GOAL	NEW CLUBS	DROPPED CLUBS
JULY/AUG/SEPT	5	7	1
OCT/NOV/DEC	3	1	7
JAN/FEB/MAR	1	2	0
APR/MAY/JUNE	1	1	0

Members			
RESULTS FOR 2017-2018			
QUARTER	MEMBER GROWTH NET GOAL	MEMBER GROWTH ACTUAL	DROPPED MEMBERS ACTUAL (including transfers)
JULY/AUG/SEPT	375	405	500
OCT/NOV/DEC	285	245	300
JAN/FEB/MAR	210	335	106
APR/MAY/JUNE	150	99	211

GOALS AND ACTUAL NEW CLUBS CUMULATIVE



GOALS AND ACTUAL MEMBERS CUMULATIVE



DROPPED CLUBS: 8	104 CLUBS OF 132 ADDED 1 OR MORE NEW MEMBERS	<u>GENDER DISTRIBUTION</u> MALE 4,638 (90.96%) FEMALE 461 (9.04%) Women Percentage Fiscal Year Goal: 25%
<u>DROPPED MEMBERS</u> DECEASED 26 CLUB CANCELLED 184 OTHER 907 TOTAL 1,117	CLICK HERE FOR CUMULATIVE MEMBERSHIP DATA	TOTAL FAMILY UNIT MEMBERS 586 FAMILY MEMBERS PAYING HALF DUES 326